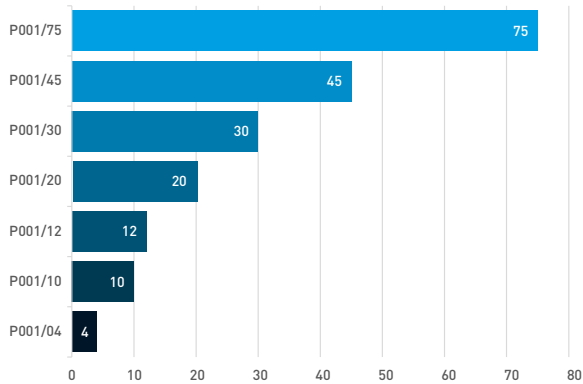


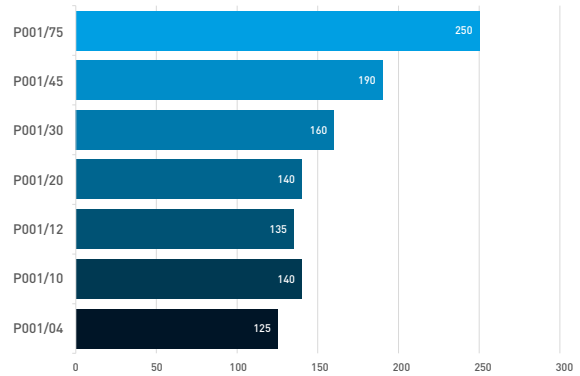
PRESSES



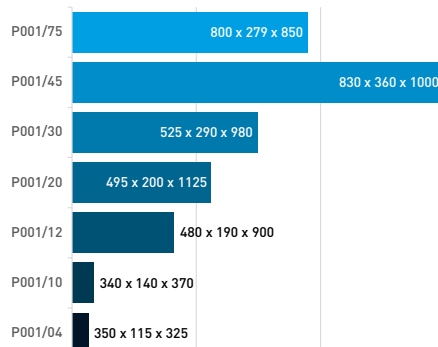
Capacity (Ton)



Ram stroke (mm)



Working area



P001/75

PNEUMATIC HYDRAULIC SHOP PRESS

Equipped with wheeled mobile piston, with winch for bench movement, two-speed manual control and pneumatic servopump with foot control



Capacity	75000 kg
Working area	800 x 279 x 850 h mm
Ram Ø	125 mm
Ram Ø	78 mm
Ram stroke	250 mm
Working pressure	0,75 ÷ 0,85 MPa
Dimensions	1140 x 800 x 1896 h mm
Net weight	460 kg



P001/45

HYDRAULIC SHOP PRESS WITH MANUAL PNEUMATIC CONTROL

With manual winch for bench handling, equipped with manual control and pneumatic servo pump with hand control.



Capacity	45000 kg
Working area	830 x 360 x 1000 h mm
Cylinder Ø	90 mm
Ram Ø	58 mm
Ram stroke	190 mm
Working pressure	7÷ 8 Bar
Max. pressure	63,5 MPa
Dimensions	1400 x 800 x 1700 h mm
Net weight	330 kg



P001/30

HYDRAULIC SHOP PRESS

With two speed pump and movable piston.



Capacity	30000 kg
Working area	525 x 290 x 980h mm
Cylinder Ø	92 mm
Ram Ø	56 mm
Ram stroke	160 mm
Max. pressure	69 MPa
Dimensions	875 x 700 x 1780 h mm
Net weight	145 kg



P001/20
HYDRAULIC SHOP PRESS

With moveable piston.



Capacity	20000 kg
Working area	495 x 200 x 1125 h mm
Cylinder Ø	75 mm
Ram Ø	48 mm
Ram stroke	140 mm
Max. pressure	69.3 MPa
Dimensions	690 x 600 x 1830 h mm
Net weight	94 kg


P001/12
HYDRAULIC SHOP PRESS

With movable piston.



Capacity	12000 kg
Working area	480 x 190 x 900 h mm
Cylinder Ø	56 mm
Ram Ø	38 mm
Ram stroke	135 mm
Max. pressure	69 MPa
Dimensions	730 x 550 x 1600 h mm
Net weight	60 kg


P001/10
HYDRAULIC SHOP PRESS

With bench and movable piston.



Capacity	10000 kg
Working area	340 x 140 x 370 h mm
Cylinder Ø	56 mm
Ram Ø	38 mm
Ram stroke	130 mm
Max. pressure	69 MPa
Dimensions	565 x 500 x 1040 h mm
Net weight	52 kg


P001/04
HYDRAULIC SHOP PRESS

Counter top, 4 ton, for bearings.



Capacity	4000 kg
Working area	350 x 115 x 325 h mm
Cylinder Ø	40 mm
Ram Ø	25 mm
Ram stroke	125 mm
Max. pressure	51 MPa
Dimensions	450 x 400 x 655 h mm
Net weight	30 kg



P022-

RATCHET ARBOR PRESS

With removeable revolving table.



Art.	Capacity	Max height piece	Max Ø piece	Arbor size	Net weight
P022/05	5000 N	90 mm	160 mm	19 x 19 mm	8 kg
P022/10	10000 N	100 mm	180 mm	25 x 25 mm	12 kg
P022/20	20000 N	170 mm	260 mm	30 x 30 mm	27 kg

P029-

RATCHET ARBOR PRESS

With removeable revolving table.



Art.	Capacity	Dimensions	Max height piece	Max ø piece	Arbor size	Net weight
P029/2	15000 N	390 x 160 x 720h mm	190 mm	180 mm	30 x 30 mm foro 10 mm	42 kg
P029/3	25000 N	450 x 200 x 870h mm	290 mm	250 mm	37,5 x 37,5 mm foro 13.80 mm	60 kg

P028-

HAND PUNCH

With spring loaded return.



Art.	Capacity	Dimensions	Max height piece	Max ø piece	Spindle travel	Net weight
P028/07	1500 N	240 x 155 x 335h mm	230 mm	150 mm	50 mm	8,5 kg
P028/14	2000 N	280 x 170 x 760h mm	275 mm	180 mm	70 mm	18 kg

0485

SHOP PRESS PIN SET



8 Pcs

Pins head size	24,7 mm
----------------	---------

0054/10
HYDRAULIC BODY FRAME REPAIR KIT


Capacity	10 ton
Ram length	330 mm
Ram stroke	130 mm
Net weight	30 kg

0054/4
HYDRAULIC BODY FRAME REPAIR KIT


Capacity	4 ton
Ram length	270 mm
Ram stroke	120 mm
Net weight	19 kg

0664
HYDRAULIC PUMP WITH PNEUMATIC PEDAL CONTROL

Useful for shop press, trolley jacks and rams.



Rated pressure	70 MPa
Working pressure	7 ÷ 8 bar
Usable oil capacity	690 ml
Air consumption	10 SCFM
Net weight	8 kg

0271
HYDRAULIC PUMP

With pump activation pedal.



Rated pressure	63,7 MPa
Usable oil capacity	790 ml
Hose length	1500 mm
Net weight	7 kg

0663
PULL BACK RAM


Capacity	5 ton
Length Closed	560 mm
Length Open	690 mm
Spindle	ø 33 mm
Swing	130 mm
Net weight	5,5 kg



0567
LOW PROFILE HYDRAULIC TROLLEY JACK

2 tons, made of steel.



Capacity	2 ton
Lifting	90 ÷ 385 mm
Dimensions	580 x 165 x 235 h mm
Net weight	13 kg

0457
LOW PROFILE JACK

2 tons, made of steel, with round handle.



Capacity	2 ton
Lifting	70 ÷ 500 mm
Dimensions	785 x 350 x 152 mm
Net weight	41 kg

0369
HYDRAULIC TROLLEY JACK

Dual pump, with removeable saddle and rubber pad.



Capacity	3,5 ton
Dimensions	745 x 335 x 180 mm
Lifting	110 ÷ 560 mm
Net weight	46 kg

0375A
LOW PROFILE HYDRAULIC TROLLEY JACK

2,5 ton, double pump quick lift, with load limiter.



Capacity	2.5 ton
Lifting	75 ÷ 500 mm
Dimensions	680 x 345 x 220 h mm
Net weight	32,5 kg

0065A
HYDRAULIC TROLLEY JACK

With removable saddle.



Capacity	3 ton
Dimensions	660 x 345 x 260 mm
Lifting	140 ÷ 515 mm
Net weight	33 kg

C038/30
HYDRAULIC TROLLEY JACK


Capacity	3 ton
Dimensions	572 x 328 x 175h mm
Lifting	130 ÷ 465 mm
Net weight	28 kg



0060

HYDRAULIC TROLLEY JACK

Metal body frame. Handle for hand carrying. Extendable lever.



Capacity	2 ton
Dimensions	535 x 225 x 145 mm
Lifting	135 ÷ 385 mm
Net weight	11 kg

C039/25

HYDRAULIC TROLLEY JACK

Aluminium and steel hydraulic trolley jack with double pump.



Capacity	2.5 ton
Dimensions	659 x 289 x 165 h mm
Lifting	110 ÷ 460 mm
Net weight	27 kg

C039/15

HYDRAULIC TROLLEY JACK

Aluminium and steel hydraulic trolley jack with double pump.



Capacity	1.5 ton
Dimensions	490 x 270 x 130 h mm
Lifting	90 ÷ 358 mm
Net weight	15 kg

0658

HYDRAULIC JACK



Capacity	10 ton
Lifting range of foot	30 ÷ 260 mm
Lifting range of head	420 ÷ 665 mm
Net weight	30 kg

0067

COUPLE JACK STAND

Height adjustable with fixing pin.



Capacity	2 ton
Heights	240 - 270 - 320 - 365 mm
Net weight	3 kg

0069-

COUPLE JACK STAND



Art.	Capacity	Height min - max	Base dimensions	Net weight
0069/3	3 ton	298 ÷ 428 mm	190 x 210 mm	6,5 kg
0069/6	6 ton	400 ÷ 610 mm	260 x 285 mm	13 kg
0069/10	10 ton	468 ÷ 718 mm	290 x 328 mm	29 kg

0021/1
HYDRAULIC FOLDING CRANE

With two pivoting wheels with brakes, cast iron wheels. Lowering system and pumping lever arranged laterally. The ability to fold the legs when not in use allows it to be stored in confined spaces.



Capacity	1000 kg
Dimensions	1555 x 1010 x 1455h mm
Fold dimensions	720 x 490 x 1520h mm
Min/max boom extension	715 ÷ 990 mm
Hook heights with raised arm	1800 mm @ 1000 kg 1970 mm @ 250 kg
Hook heights with lowered arm	160 mm @ 250 kg 400 mm @ 1000 kg
Front opening	890 mm
Net weight	64,5 kg

0063
HYDRAULIC FOLDING CRANE

With two pivoting wheels and rear pad brake, lowering system and pumping lever placed in the rear, cast iron wheels. The ability to fold the legs when not in use allows it to be stored in confined spaces.



Capacity	1000 kg
Dimensions	1800 x 1000 x 1500h mm
Fold dimensions	800 x 860 x 1600h mm
Min/max boom extension	680 ÷ 1220 mm
Hook heights with raised arm	2100 mm @ 1000 kg 2550 mm @ 250 kg
Hook heights with lowered arm	0 mm @ 250 kg 480 mm @ 1000 kg
Front opening	800 mm
Net weight	90 kg

0021/2
HYDRAULIC FOLDING CRANE

With two pivoting wheels with brakes, cast iron wheels. Lowering system and pumping lever arranged laterally. The ability to fold the legs when not in use allows it to be stored in confined spaces.



Capacity	2000 kg
Dimensions	1730 x 1025 x 1400h mm
Fold dimensions	760 x 760 x 1635h mm
Min/max boom extension	750 ÷ 1280 mm
Hook heights with raised arm	1870 mm @ 2000 kg 2280 mm @ 500 kg
Hook heights with lowered arm	0 mm @ 500 kg 430 mm @ 2000 kg
Front opening	910 mm
Net weight	90,5 kg

0094
TRANSMISSION JACK

With load limiter, cross support and tilt support to better align and position gearboxes and differentials.



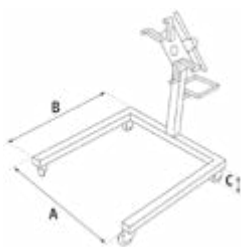
Capacity	500 kg
Dimensions	1190 x 700 x 660 mm
Min - Max height	1190 ÷ 2000 mm
Net weight	32,5 kg



S033

ENGINE STAND

2 swivel wheels with brake and 2 fixed cast iron wheels, possibility to tilt the engine. Equipped with rotating small parts shelf.

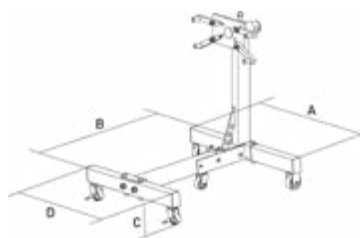


Capacity	600 kg
Dimensions	1200 x 840 x 930 mm
Net weight	27,5 kg
A	720 mm
B	840 mm
C	170 mm

S068

ENGINE STAND

2 swivel wheels with brake and 2 fixed cast iron wheels, possibility to tilt the engine. The ability to fold it when not in use allows it to be stored in confined spaces.



Capacity	680 kg
Dimensions	860 x 830 x 900 mm
Net weight	31 kg
A	820 mm
B	810 mm
C	180 mm
D	680 mm

S019

ENGINE STAND

2 wheels with breaks and 2 fix wheels, possibility to tilt the motor.



Capacity	450 kg	B	810 mm
Dimensions	865 x 810 x 870 mm	C	150 mm
Net weight	21 kg	D	450 mm
A	780 mm		

S024

ENGINE SUPPORT

Engine support holds your engine or transmission in place during heavy automotive repairs, used to support the engine while removing gear box, transmission, replacing clutch and all motor mounts. Rubber feet for safe hold of motor, easy regulation for hold engine in its place in the car. swivel and tilting holders.



Capacity	500 kg
Adjusting height	205 mm
Bed length	730 ÷ 1480 mm
Net weight	13 kg

0147

SHOP CRANE LEVELER

Shop crane and crane leveler, easy to use, just crank to level, tilts forward and backward for easy motor mount alignment



Capacity	680 kg
Width	440 mm
Max stroke of slide	330 mm
Chain	350 mm
Net weight	5 kg

R015

CAR RAMPS SET

Set consisting of two solid ramps to facilitate work under vehicles. These small ramps are suitable for the most common models of small cars and SUVs or even longer vehicles. Made of polypropylene, the wedges are significantly more reliable than steel ramps. In addition, thanks to their non-slip structure, they offer excellent stability. Lightweight and well-shaped, the ramps are easy to transport and space-saving.



Dimensions	905 x 330 x 218 mm
Capacity	2,5 ton
Max tire width	240 mm
Min - Max height	170 mm
Tilting	15°
Net weight	8 kg

0649-
ALUMINUM RAMPS

In aluminum with non-slip floors. Load 170kg.



Art.	Dimensions	Capacity	Max Working angle	Max Working height	Net weight
0649/1500	1520 x 735 mm	170 kg	12,5 % (7°)	180 mm	13,5 kg
0649/1800	1800 x 735 mm	150 kg	12,5 % (7°)	220 mm	16 kg

0594
OIL DRAINER WITHOUT TANK

With wheels, to use under lifts, for waste oil.



Base dimensions	390 x 390 mm
Height max	1700 mm
Net weight	13 kg

0595
OIL DRAINER

With tank and wheels, to use under lifts, for waste oil.



Tank capacity	70 l
Height min - max	1170 ÷ 1860 mm
Maximum tank pressure	0.45 bar
Net weight	23 kg

0596
PNEUMATIC OIL DRAINER

With wheels and different size of suction probes, for waste oil, for use under lifts too.



Tank capacity	70 l
Measuring tank capacity	10 l
Height max	1500 mm
Metal probe	2 x ø6 mm x 695 mm
Nylon probe	2 x ø6 mm x 680 mm 2 x ø8 mm x 700 mm
Suction	ø6 x 4,5 mm - 0,4 ÷ 0,8 l/min ø8 x 6,5 mm - 1 ÷ 1,6 l/min
Rubber hose length	Suction 1500 mm Drain 2050 mm
Power pressure	8 ÷ 10 bar
Maximum tank pressure	0.45 bar
Net weight	25 kg